

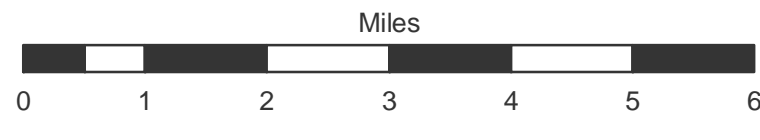
# SPOKANE COUNTY

## 2010 Library Voter Results by Precinct

### Voter Results

- 0% - 35.35%
- 35.36% - 40%
- 40.01% - 45%
- 45.01% - 50%
- 50.01% - 55%
- 55.01% - 60%
- 60.01% - 65%
- 65.01% - 70%
- 70.01% - 73.27%

- Roads
- Railroad
- Precinct Boundaries
- Municipal Boundaries
- Lakes/Rivers
- Sections
- Township/Range

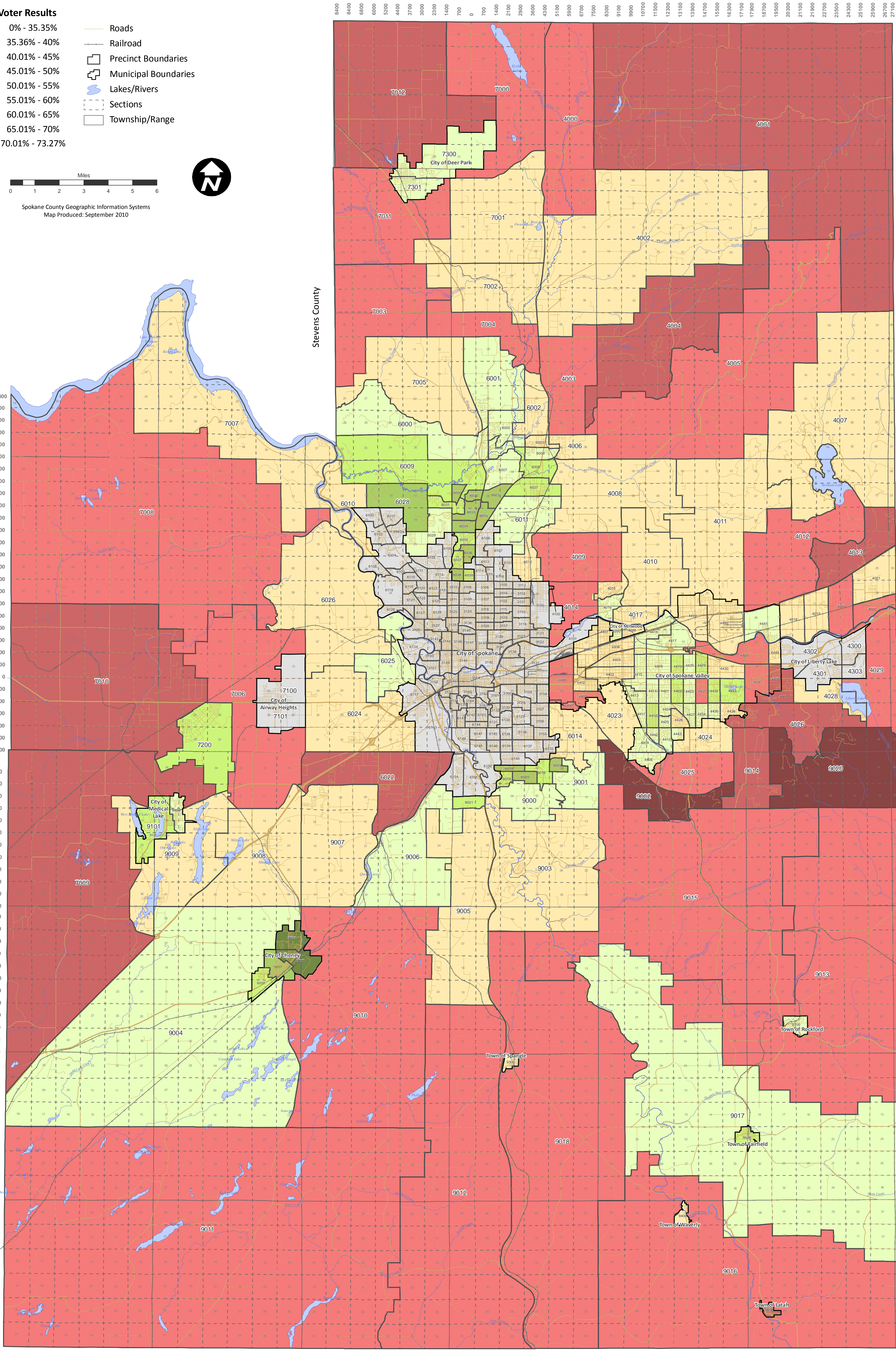


Spokane County Geographic Information Systems  
Map Produced: September 2010



Lincoln County

18300  
17500  
16700  
15900  
15100  
14300  
13500  
12700  
11900  
11100  
10300  
9500  
8700  
7900  
7100  
6300  
5500  
4800  
4000  
3200  
2400  
1600  
800  
0  
800  
1600  
2400  
3200  
4000  
4800  
5600  
6300  
7100  
7900  
8700  
9500  
10300  
11100  
11900  
12700  
13500  
14300  
15100  
15900  
16700  
17500  
18300



State of Idaho

43000  
42300  
41500  
40700  
39900  
39100  
38300  
37500  
36700  
35900  
35100  
34300  
33500  
32700  
31900  
31100  
30300  
29500  
28700  
27900  
27100  
26300  
25500  
24700  
23900  
23100  
22300  
21500  
20700  
19900  
19100  
18300  
17500  
16700  
15900  
15100  
14300  
13500  
12700  
11900  
11100  
10300  
9500  
8700  
7900  
7100  
6300  
5500  
4800  
4000  
3200  
2400  
1600  
800  
0  
800  
1600  
2400  
3200  
4000  
4800  
5600  
6300  
7100  
7900  
8700  
9500  
10300  
11100  
11900  
12700  
13500  
14300  
15100  
15900  
16700  
17500  
18300  
19100  
19900  
20700  
21500  
22300  
23100  
23900  
24700  
25500  
26300  
27100  
27900  
28700  
29500  
30300  
31100  
31900  
32700  
33500  
34300  
35100  
35900  
36700  
37500  
38300  
39100  
39900  
40700  
41500  
42300  
43000

Whitman County

Pend Oreille County