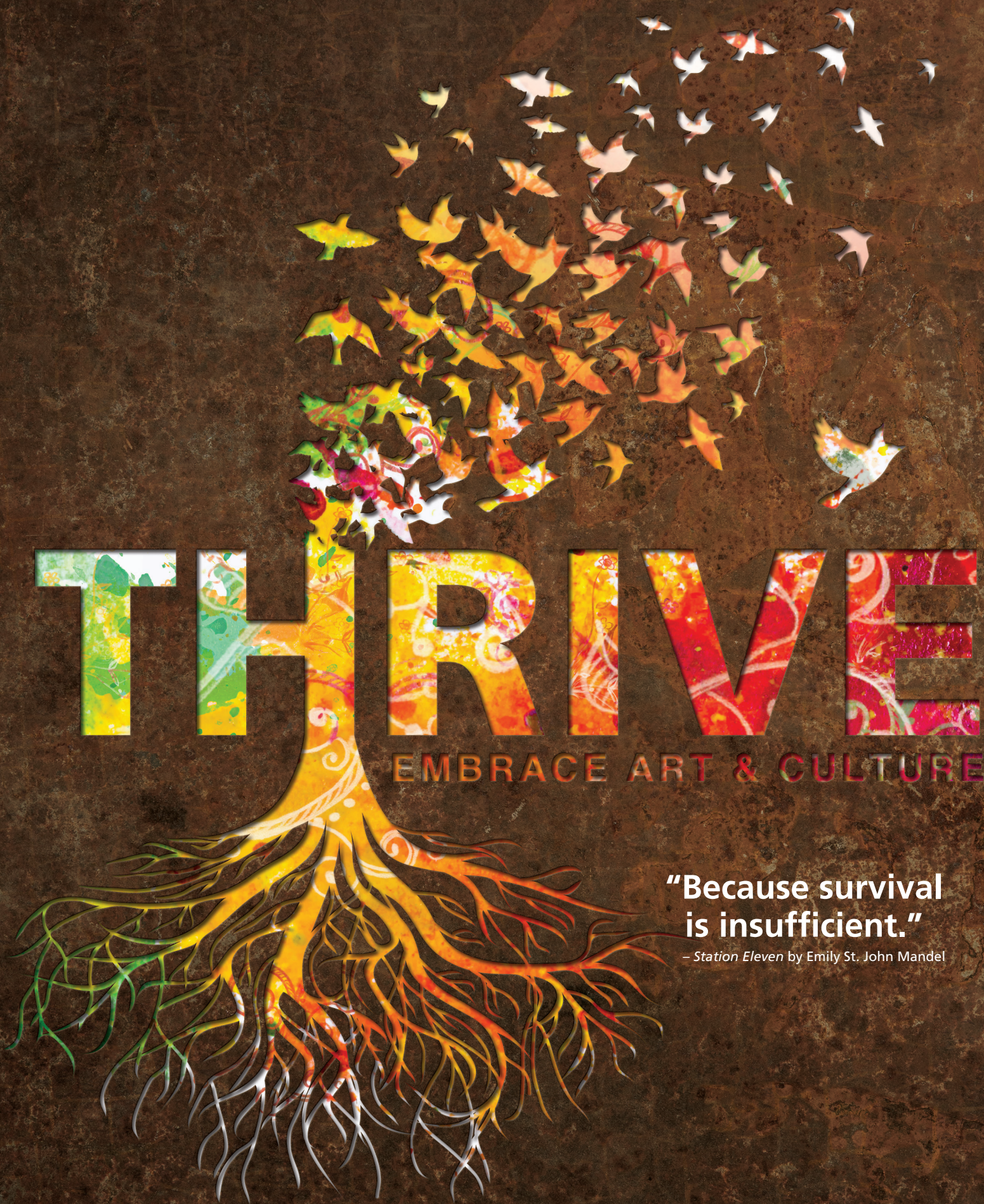


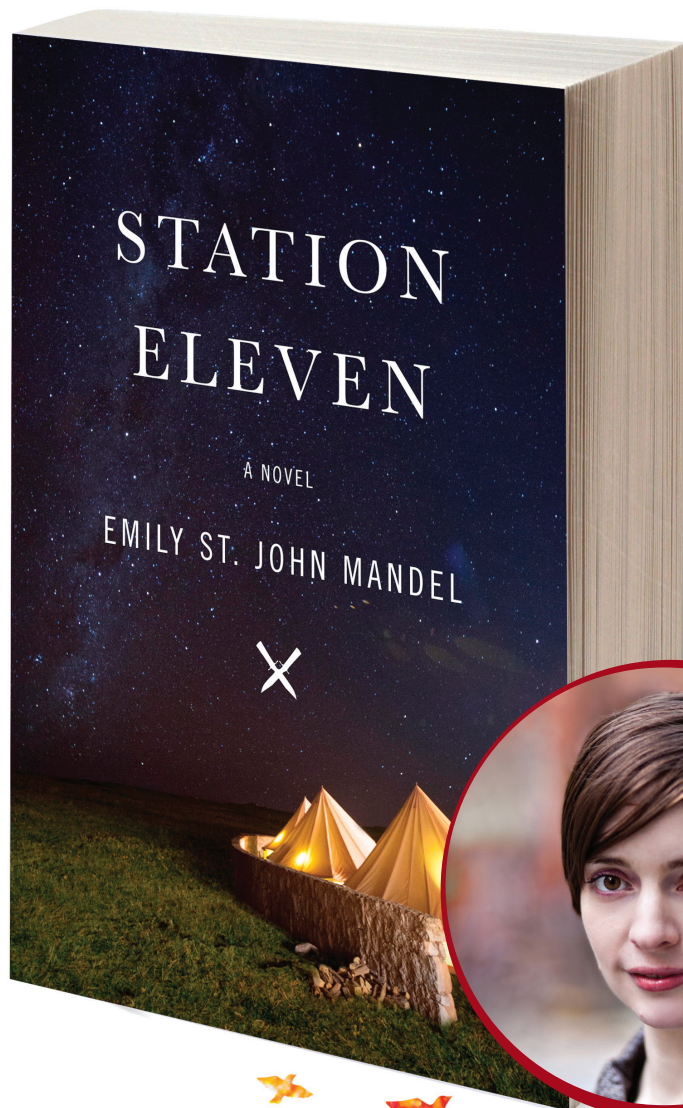
SPOKANE COUNTY LIBRARY DISTRICT



THRIVE
EMBRACE ART & CULTURE

**"Because survival
is insufficient."**

– *Station Eleven* by Emily St. John Mandel



Emily St. John Mandel's award-winning novel, *Station Eleven*, examines humanity's struggle to survive in a post-apocalyptic world. A desire for art and culture endures even among the most dire of circumstances.

Our fall **Thrive** series invites you to embrace art and culture with Shakespeare performances, musical quartets, film series, and more. Discover enriching programs for all ages based on *Station Eleven's* themes.



Meet the Author: Emily St. John Mandel

Spokane Is Reading welcomes author Emily St. John Mandel and her book, *Station Eleven*, for the 14th annual community reading event on Thursday, October 29. Ms. Mandel will make two appearances that day, the first at CenterPlace Event Center at 1pm and the second at The Bing Crosby Theatre at 7pm. Following each presentation, she will be available to sign books and Auntie's Bookstore will have copies of her titles available to purchase.

CENTERPLACE EVENT CENTER

Thursday, Oct 29, 1–3pm
2426 N Discovery Pl
Spokane Valley WA 99216

BING CROSBY THEATER

Thursday, Oct 29, 7–9pm
901 W Sprague Ave
Spokane WA 99201

Spokane Is Reading is sponsored and organized by Spokane County Library District, Spokane Public Library, and Auntie's Bookstore.



A special thanks to our Friends of the Library for their generous donations to the Spokane Is Reading program.



Traveling Symphony: Whitworth Quartet Concerts

Experience the enchanting music of our very own "Traveling Symphony". Listen to a quartet of Whitworth's finest music majors perform a series of melodies, both classic and modern, in the library's comfortable atmosphere.

AIRWAY HEIGHTS	Saturday, Oct 17	11am
ARGONNE	Saturday, Oct 3	1pm
CHENEY	Saturday, Oct 17	3pm
DEER PARK	Sunday, Oct 4	1pm
MEDICAL LAKE	Saturday, Oct 17	1pm
MORAN PRAIRIE	Saturday, Nov 7	11am
NORTH SPOKANE	Sunday, Oct 4	3pm
OTIS ORCHARDS	Saturday, Oct 3	3pm
SPOKANE VALLEY	Saturday, Oct 3	4:30pm

Mary Shelley's Frankenstein: Anatomy of a Masterpiece

Presented by Lance Rhoades

Who controls life and death? Does a man-made being have (human) rights? Although regarded as Gothic sensationalism when first published—both for its lurid tale of a scientist driven mad by his obsession to animate the dead, and for the surprising news that the author was nineteen-year-old Mary Shelley—Frankenstein has resonated widely in the popular imagination, most notably in theater and cinema. Over the two centuries since its publication, the work has also served as a vivid allegory in debates about technology, slavery, and universal suffrage. Led by scholar Lance Rhoades, this multi-media presentation considers how Shelley addressed some of mankind's greatest concerns with a creation that took on a life of its own. Explore and discuss these complicated and complex issues.

CHENEY	Tuesday, Oct 6	6:30pm
NORTH SPOKANE	Wednesday, Oct 7	6:30pm

Sponsored by:

humanities
WASHINGTON

h
w

Ignite! Community Theatre: Shakespeare Selections

Ignite! Community Theatre celebrates the Bard with small troupe performances that include lectures, scenes from Shakespeare's plays, and some audience participation. Witness the art of Shakespeare firsthand much like the Traveling Symphony's audiences in *Station Eleven*. This talented, local group of actors will transport you to another time and cause you to reflect on humanity as a whole.

ARGONNE	Monday, Oct 12	6:30pm
CHENEY	Monday, Oct 19	6:30pm
NORTH SPOKANE	Monday, Oct 26	7pm
OTIS ORCHARDS	Saturday, Oct 17	2pm
SPOKANE VALLEY	Thursday, Oct 15	7pm

Post-Apocalyptic Survival: Film Series

Explore post-apocalyptic worlds through the intriguing genre of film. Watch everything from the 1964 classic *Last Man on Earth* to the visionary drama, *Snowpiercer*. After each viewing, a local film expert will be on-hand to facilitate a discussion and field questions from the audience. Please note each film's rating, as these are intended for an adult audience.

AIRWAY HEIGHTS	Sunday, Nov 8	2pm
MAD MAX (RATED R) DISCUSSION LED BY SEAN FINLEY		

CHENEY	Sunday, Oct 18	2pm
SNOWPIERCER (RATED R) DISCUSSION LED BY MARK KEATHLEY		

MEDICAL LAKE	Tuesday, Nov 3	6pm
LAST MAN ON EARTH (1964, UNRATED) DISCUSSION LED BY SEAN FINLEY		

MORAN PRAIRIE	Tuesday, Oct 13	6pm
CHILDREN OF MEN (RATED R) DISCUSSION LED BY ADAM HARUM		

NORTH SPOKANE	Thursday, Oct 15	6:30pm
BOOK OF ELI (RATED R) DISCUSSION LED BY ADAM HARUM		

SPOKANE VALLEY	Thursday, Oct 8	6:30pm
BLADE RUNNER (RATED R) DISCUSSION LED BY ADAM HARUM		

Zentangle

Zentangle is an easy-to-learn, relaxing, and fun way to create beautiful images by drawing structured patterns. It increases focus and imagination while also providing artistic satisfaction and an increased sense of personal well-being. Local expert Loretta West will teach you how to express your creative visions through this popular method.

AIRWAY HEIGHTS	Tuesday, Nov 24	1pm
ARGONNE	Wednesday, Nov 25	7pm
DEER PARK	Thursday, Nov 12	2pm
CHENEY	Wednesday, Nov 18	1pm
MORAN PRAIRIE	Tuesday, Nov 10	2pm
NORTH SPOKANE	Thursday, Nov 19	7pm
SPOKANE VALLEY	Thursday, Nov 5	7pm

Pandemic Tournament

Recreate the panic of *Station Eleven's* Georgia Flu with the board game, Pandemic. In this truly cooperative game, players make up a team of specialists who must work together to eradicate four diseases threatening to overwhelm the world. Can you save humanity from extinction? Bring your friends or come and meet new ones to find out!

Special thanks to Uncle's Games and Merlyn's for providing copies of the game and expansion packs.

MORAN PRAIRIE	Sunday, Nov 22	1–5pm
NORTH SPOKANE	Saturday, Nov 21	1–5pm
SPOKANE VALLEY	Friday, Nov 20	5–9pm

Library Locations

AIRWAY HEIGHTS
1213 S Lundstrom St
509.893.8250

ARGONNE
4322 N Argonne Rd
509.893.8260

CHENEY
610 First St
509.893.8280

DEER PARK
208 S Forest Ave
509.893.8300

FAIRFIELD
305 E Main St
509.893.8320

MEDICAL LAKE
321 E Herb St
509.893.8330

MORAN PRAIRIE
6004 S Regal St
509.893.8340

NORTH SPOKANE
44 E Hawthorne Rd
509.893.8350

OTIS ORCHARDS
22324 E Wellesley Ave
509.893.8390

SPOKANE VALLEY
12004 E Main Ave
509.893.8400

